

# EAST SPRING PRIMARY SCHOOL

## English Language Department



***Gracious School , Life-long Learners***



# Key Pedagogies in the EL Syllabus

Area	Enhancement
<b>Grammar</b>	<b>Usage of inductive and deductive approaches</b> <ul style="list-style-type: none"> <li>• Contextualised from Stellar texts</li> <li>• Provision of grammar slides and worksheets</li> <li>• SLS lessons/ packages as additional teaching resources</li> </ul>
<b>Writing</b>	<b>Systematic Teaching of Writing Skills</b> <ul style="list-style-type: none"> <li>• Strengthening of the reading-writing connection, taking into account the purposes of texts, e.g. texts that instruct/inform/entertain and the writing techniques involved</li> </ul>



# Key Pedagogies in the EL Syllabus

Area	Enhancement
Reading	<p><b>Teaching of Close and Critical Reading Skills</b></p> <ul style="list-style-type: none"> <li>• Teaching of reading comprehension skills more systematically</li> <li>• Introduction of word study lessons to strengthen word recognition skills</li> </ul> <p><b>Extensive Reading</b></p> <ul style="list-style-type: none"> <li>• Ringfencing of one reading period a week, starting at lower primary</li> <li>• Provision of additional reading resources in SLS</li> <li>• Use of newspapers papers and magazines for exposure to various text types</li> </ul>
Oracy	<p><b>Explicit Teaching of Oracy Skills</b></p> <ul style="list-style-type: none"> <li>• Provision of oracy lessons to promote thinking and enable our students to discuss, reflect and express their ideas confidently and persuasively.</li> <li>• Use of acronyms (OREOS) aid with stimulus-based conversation</li> </ul>



# Learning Resources

## Stellar 2.0

- Stellar Readers
- Unit Worksheets

## Reading

- Extensive Reading Books/ Mini Class Library
- Little Red Dot and Magazines
- Online reading resources

## Listening and Speaking

- Oral Package
- Listening Comprehension Package

## Writing

- Writing Package (inclusive of Composition WS and Phrase List)
- My Creative Writing Companion book
- Situational Writing Package
- Journal Writing



# Assessment

PAPER	COMPONENT	MARKS	WEIGHTING
1 (Writing)	Situational Writing Continuous Writing	14 36	25%
2 (Language Use and Comprehension)	<b>Booklet A:</b> Grammar Vocabulary Vocabulary Cloze Visual Text Comprehension <b>Booklet B:</b> Grammar Cloze Editing for Spelling and Grammar Comprehension Cloze Synthesis / Transformation Comprehension OE	90	45%
3 (Listening Comprehension)	Listening Comprehension	20	10%
4 (Oral Communication)	Reading Aloud Stimulus-based Conversation	12 25	20%





# Key Programmes

**English Language Week** is an annual event dedicated to celebrating the language through a range of purposeful activities. During this week, students participate in specially curated learning experiences or learning journeys aligned with their STELLAR units. Through these experiences, we aim to nurture students' appreciation of and lasting interest in the English language.



# Key Programmes



**Book Character Day** is an annual celebration where students and teachers dress up as their favourite book characters. The day features activities such as book readings during recess, and in class, students share about their characters and the books they come from, fostering a love for reading.





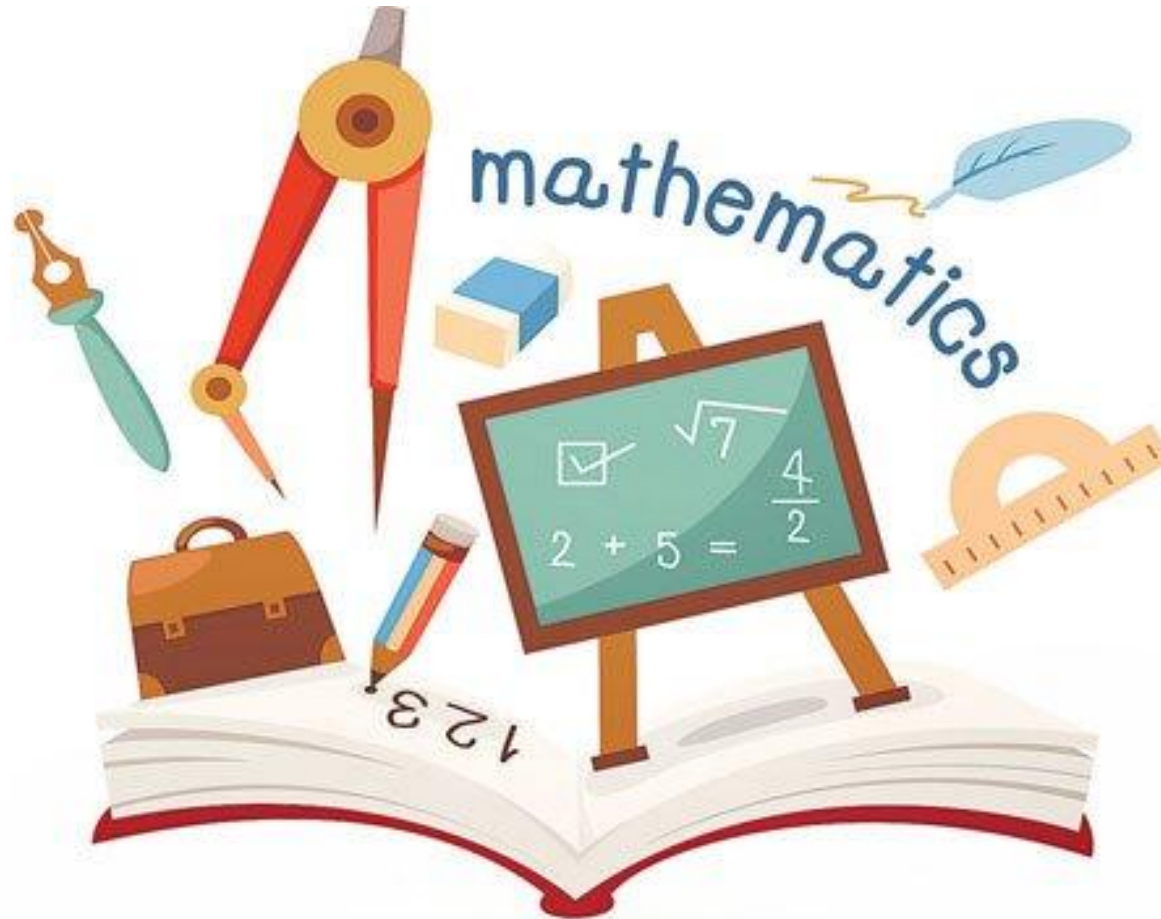
# How You Can Support Learning at Home

1. Read regularly with your child and discuss the story and characters
2. Encourage your child to speak in full sentences in daily conversations
3. Provide simple writing opportunities (journals, notes, short reflections)
4. Expose your child to a range of English texts (storybooks, magazines)
5. Praise effort and progress to build confidence

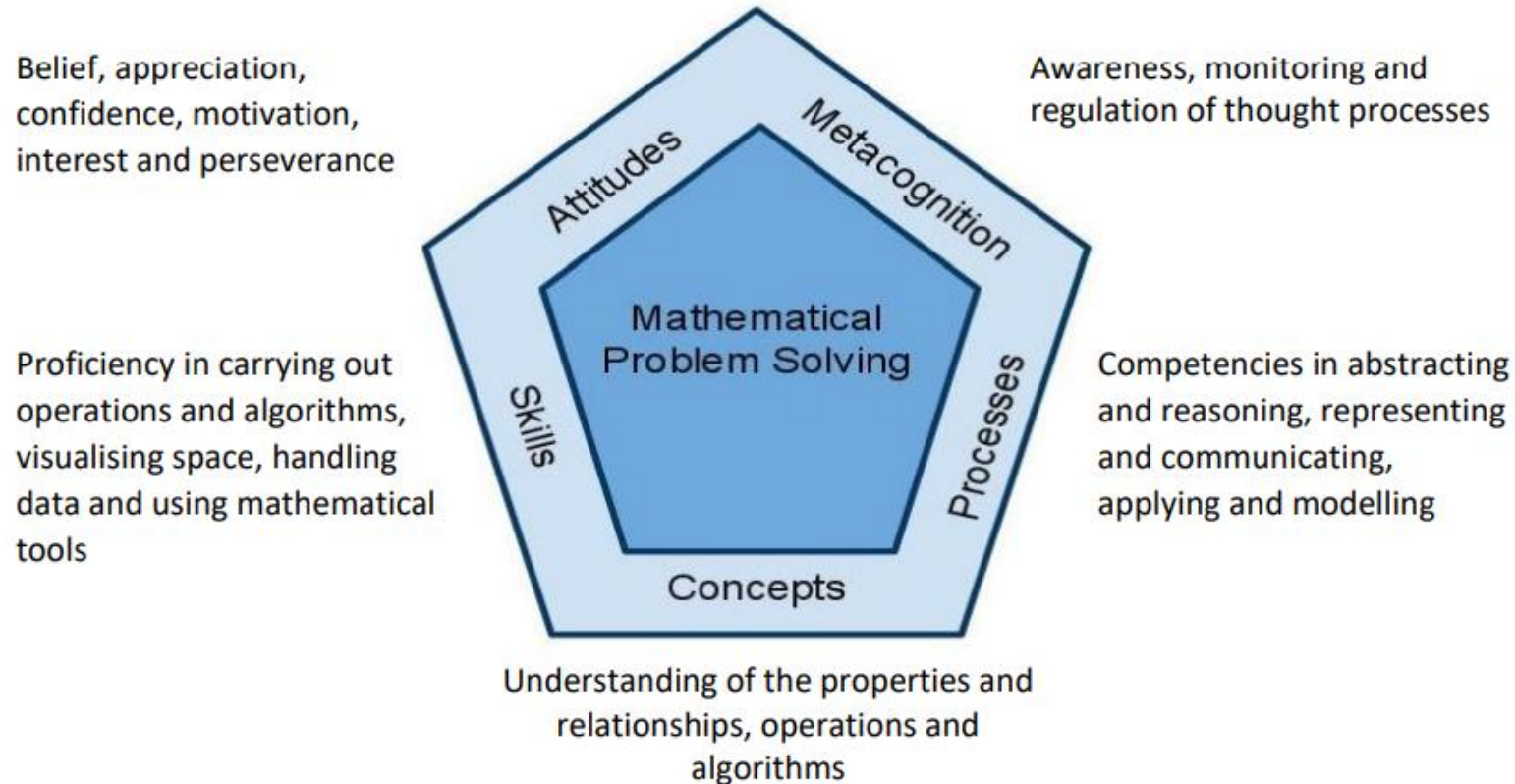




# P5 Curriculum Slides



# MOE Mathematics Curriculum Framework



2021 Primary Math Syllabus



# Teaching and Learning

## Mathematical Skills

- numerical calculations
- algebraic manipulation
- spatial visualization
- data analysis
- measurement
- use of mathematical tools
- estimation

**NEW!**

## Topics in P5 (Standard MA)

- Order of Operations
- Multiplication of Fractions
- Area of Triangle
- Volume of Cube and Cuboid
- Rate
- Percentage
- Angles in Figures
- Properties of Triangles, Parallelogram, Rhombus and Trapezium

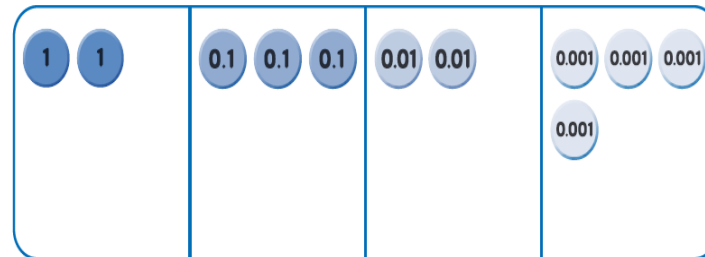
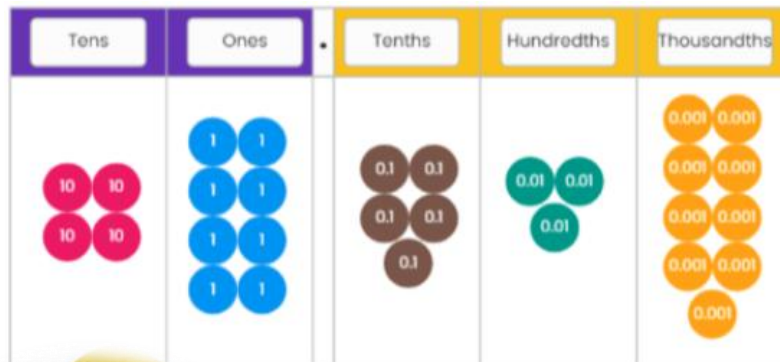


# Approach to Learning

Concrete

Pictorial

Abstract



$$2 \text{ ones} + 3 \text{ tenths} + 2 \text{ hundredths} + 4 \text{ thousandths} = 2.324$$

$$2 + 0.3 + 0.02 + 0.004 = 2.324$$

Use of physical objects


Use of drawings

Use of numbers





# Approach to Learning



Monday to Sunday		
02:00 hrs – 18:00 hrs	1 <sup>st</sup> Hour or part thereof	\$1.80
	Next subsequent 15mins or part thereof	\$0.50
18:00 hrs – 02:00 hrs	Per Entry	\$2.40
Grace Period	10 mins	

Rate



Percentage: Discount

## Relating Math to real-life objects



# ICT infused Lessons

## 1 What Is Rate?

**BEST PRICES**

Item	Price
Strawberries	\$7.95 per box
Plums	\$2.95 for 3
Grapes	\$1.10 per 100g
Grapes	\$6.00 per bag
Cherries	\$1.25 for 3
Bananas	\$2.55 per kg
Grapes	\$11.00 per kg
Cherries	\$3.95 per kg

\$1.10	100 g
\$2.20	200 g
\$3.30	300 g
\$11	1000 g
<b>\$11</b>	

Video player controls: 04:41

## Fraction as Division

$1 \div 2 = \frac{1}{2}$

The diagram shows a pizza divided into two equal halves, each labeled  $\frac{1}{2}$ . A clock face is also shown with the fraction  $\frac{1}{2}$  indicated on the right side.

Using stories or videos to introduce lessons

## Q1

Find the value of  $\frac{2}{6} \times \frac{1}{2}$   
Give your answer as a fraction in its simplest form.

Prepopulated Answer here...

Suggested Answer

Feedback

Suggested Answer

$\frac{1}{6}$

$$\frac{2}{6} \text{ of } \frac{1}{2} = \frac{2}{6} \times \frac{1}{2} = \frac{1}{6}$$

E-assignments to review learning

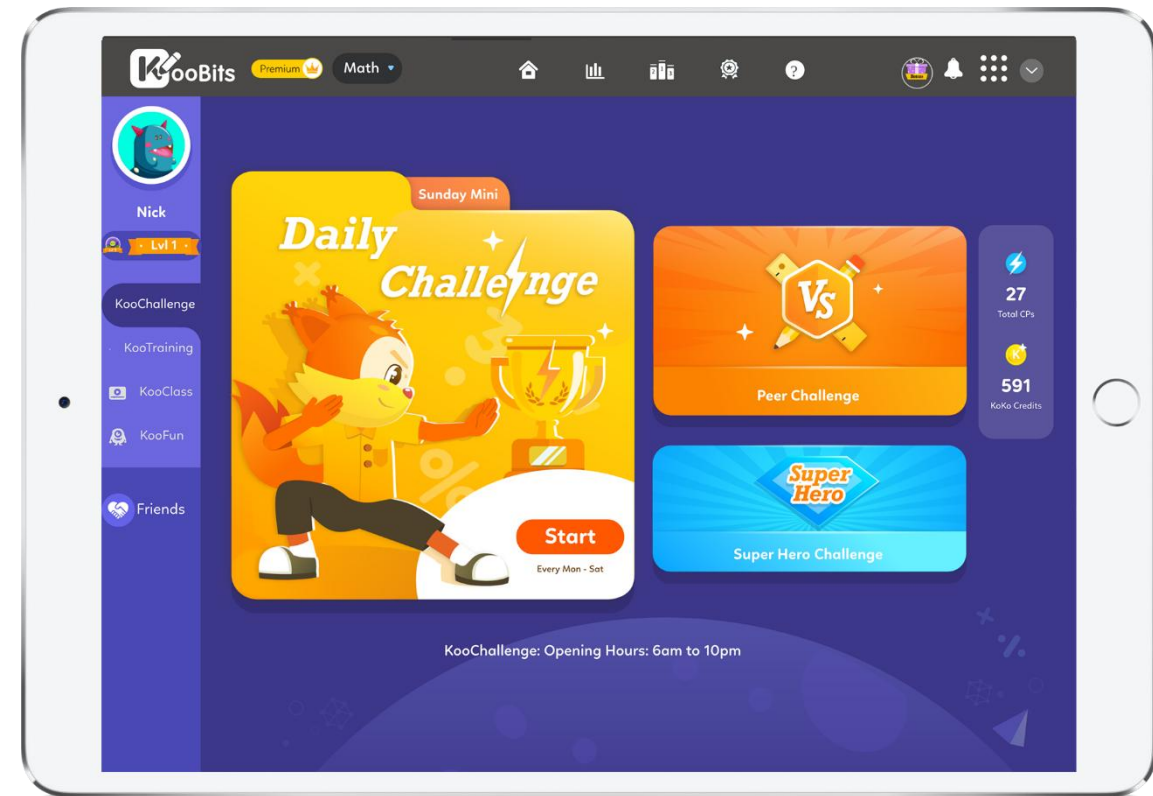


# Self-directed Learning @ Home



## Adaptive Learning System (SLS)

## Koobits



# Assessment

## Format of P5 Standard Mathematics for End of Year examination

Paper	Booklet	Item Type	Number of questions	Number of marks per question	Total marks	Duration
1	A	Multiple-choice	10	1	10	1 h 10 min
			8	2	16	
	B	Short-answer	12	2	24	
2		Short-answer	5	2	10	1 h 20 min
		Structured/ Long-answer	10	3, 4 or 5	40	
Total			45	-	100	2 h 30 min

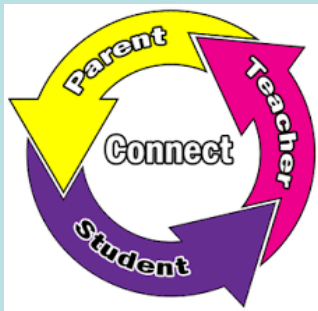




# How can I support?

## Monitor

- Be aware of your child's progress / challenges if any
- Ensure work is completed and submitted timely
- Limit calculator use to promote mental maths skills



## Encourage

- Help your child to
  - cultivate good work habits and positive learning attitude (focus on process eg. effort put in)
  - emphasize the importance of checking their work
- Show application and draw links of Math in daily activities (eg. GST, percentage, measurement)

## Partner



- Regular revision and practise concepts taught in school (Consistency is the KEY)
- Timed practice at home (to be able to sit down, focus and complete a task within allocated time)
- Focus revision on weak areas or concepts rather than doing many practice papers



# Science



# Science Learning in East Spring Primary

**Vision:** To develop informed Science learners who will inquire & innovate in their daily life.





# Key Programmes for Primary 5

- P5 Hydroponics Learning Journey
- Hands on Urban Farming Experience
- SONY Creative Science Award (Toy making Competition)





# Key Resources

## Textbook & Activity Book



East Spring Primary School  
P5 Science Worksheets 2026

Topic:  
2. Cycles in Water

Name: \_\_\_\_\_  
Class: \_\_\_\_\_  
Parent's/ Guardian's signature: \_\_\_\_\_

## Topical & Supplementary Worksheets

### Review Exercise

Name: \_\_\_\_\_  
Class: \_\_\_\_\_

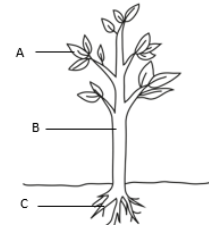
Review Exercise (Standard)

Theme/Topic 3: Plant Transport Systems

#### Section A:

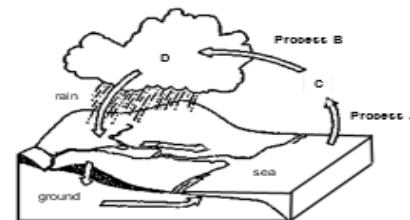
For questions 1-3, select the answer from one out of the four options. Indicate your answer in the bracket provided. (2 marks each)

1. The following diagram shows a plant.



#### Graphic Organizer 2

The diagram below shows the water cycle.



1. State the processes A and B.

## SLS resources



#### Learning Outcomes

Learn how the water cycle provides the Earth with a continuous supply of water.

The things around us can be grouped into living and non-living things. How are living things different from non-living things?  
What do living things need to survive? Watch the video to find out.



Read Less



# Parent's Support & Partnership

- Encourage your child to read widely to promote interest in things around them. ( e.g Science books, magazine, newspapers on Science related articles)
- Support their participation in Science programmes/competitions.
- Monitor their completion of assignments given.
- Look out for their overall well-being beside academic achievement.

Bottled water contains more plastic particles than previously thought: Study



The findings show that bottled water could contain up to 100 times more plastic particles than previously estimated. - news reels



# Mother Tongue Languages

## Our Mother Tongues as Living Languages



**CHINESE  
LANGUAGE**

**MALAY  
LANGUAGE**

**TAMIL  
LANGUAGE**





# Mother Tongue Languages Key Curriculum

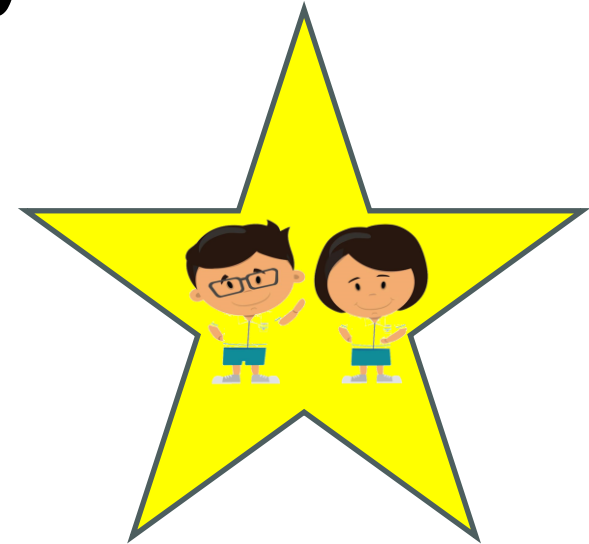
**Equips learners with:**

**21st Century  
Competencies**

**Culture  
& Values**

**Language  
Competencies**

**Essential  
Communication**



**Joyful Learning,  
Confident User**

**Singapore's National Identity- Bilingualism**



**Gracious School , Life-long Learners**





# ESPS MTL Department

- Designs authentic and meaningful learning experiences to nurture confident and proficient users of the MTL.
- Committed to engaging students meaningfully in learning and using their MTL both within and beyond the classroom.



# MTL Curriculum (P1- P6)

- Differentiated Instruction (P1- P6)
- Bridging Programme (P1- P2)
- Mother Tongue Support Programme (P3- P4)
- Higher Chinese & Higher Malay offered from P3
- Higher Tamil from P5
- Foundation Languages offered from P5

<b>Support</b>	<b>Strengthen</b>	<b>Stretch</b>
----------------	-------------------	----------------



# MTL Heroes Adventure Task Card

Students receive task cards with engaging Mother Tongue Language activities to enhance their learning experience.

**Differentiated Learning Approach** Tasks are organised by difficulty levels, allowing students to choose reading, speaking, and writing activities matching their MTL proficiency level.

**Cultural Exploration Component** Cultural tasks help students understand and explore Malay, Indian, and Chinese traditions, deepening appreciation of Singapore's diverse heritage.

**Recognition and Rewards System** Students earn stamps for completing tasks, which can be exchanged for tokens each term to celebrate their achievements.



# Using of dictionaries for exam

- From P4, students can use **SEAB-approved dictionaries (hardcopy or e-dictionary) *only* for Paper 1 (Composition)** during Mother Tongue Language (MTL) exams and Weighted Assessment.
- All dictionaries must be clean (No annotations, notes, highlights, or sticky tabs are allowed).
- List of approved dictionaries for use:

<https://go.gov.sg/seab-approveddictionaries>





# Partnering with Parents



Cultivate the love of reading MTL books, e.g. visit the library or borrow e-books



Encourage them to take small steps in learning MTL, e.g. read signs, listen to music



Do fun activities in MTL together, e.g. watch a film or performance



Provide a conducive environment for learning MTL, e.g. access to MTL music and books



# Thank you!



***Gracious School , Life-long Learners***

